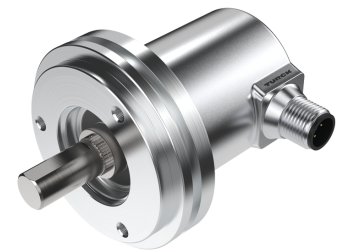
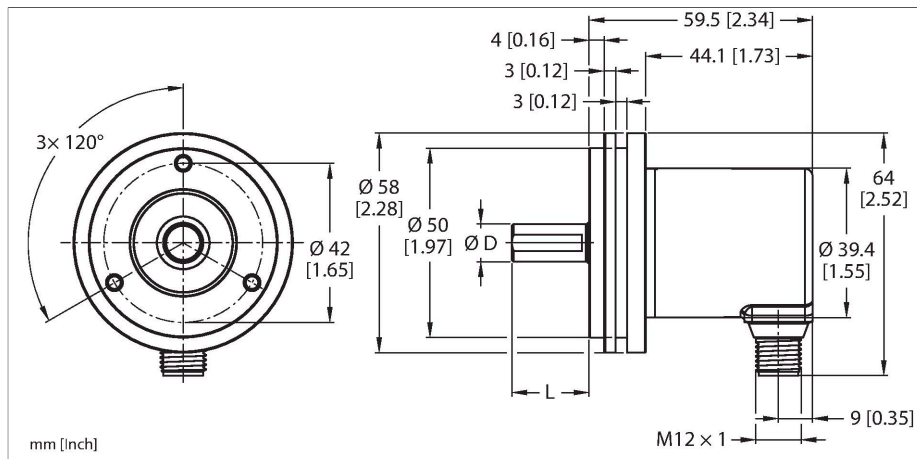


REM-E-195T6S-IOL32B-H1141

Absolute Rotary Encoder - Multiturn – IO-Link Efficiency Line



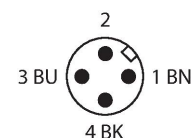
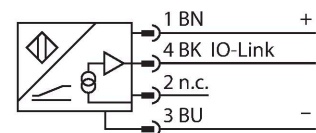
Technical data

| | |
|---|---------------------------|
| Type | REM-E-195T6S-IOL32B-H1141 |
| ID | 100021183 |
| Measuring principle | Magnetic |
| General data | |
| Max. Rotational Speed | 4000 rpm |
| Repetition accuracy | ± 0.2 ° |
| Absolute accuracy | ± 0.5 ° |
| Output type | Absolute multiturn |
| Electrical data | |
| Operating voltage | 18...30 VDC |
| No-load current | 30 mA |
| Short-circuit protection | yes |
| Wire breakage/Reverse polarity protection | yes |
| Communication protocol | IO-Link |
| IO-Link | |
| IO-Link specification | V 1.1 |
| Programming | FDT/DTM |
| Mechanical data | |
| Design | Solid shaft |
| Flange type | Synchro flange |
| Flange diameter | Ø 58 mm |
| Shaft Type | Solid shaft |
| Shaft diameter D [mm] | 6 |
| Shaft Length L [mm] | 12.5 |
| Shaft material | Stainless steel |

Features

- Synchro flange, Ø 58 mm
- Solid shaft, Ø 6 mm × 12.5 mm
- Magnetic measuring principle
- Shaft material: stainless steel
- Protection class IP64 on housing and shaft side
- -20...+70 °C
- Max. 4000 rpm (continuous operation 2000 rpm)
- Energy harvesting technology
- 18...30 VDC
- M12 × 1 male connector, 4-pin
- Singleturn resolution 14 bit scalable, default 14 bit
- Multiturn resolution scalable only to 18 bits over total resolution, default 18 bits
- Total resolution 32 bit scalable, default 32 bit

Wiring diagram



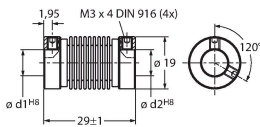
Technical data

| | |
|-------------------------------------|--|
| Housing material | Die-cast zinc |
| Electrical connection | Connector, M12 × 1 |
| | 5-pin |
| Axial shaft load | 40 N |
| Radial shaft load | 80 N |
| Environmental conditions | |
| Ambient temperature | -20...+70 °C |
| Vibration resistance (EN 60068-2-6) | 30 g (300 m/s ²), 10...2000 Hz |
| Shock resistance (EN 60068-2-27) | 500 g (2500 m/s ²), 4 ms |
| Protection class | IP64 |
| Protection class shaft | IP64 |
| MTTF | 25 years |

Accessories

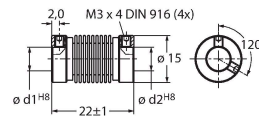
RCS-19-06-06 1545360

Bellows coupling, outer diameter:
19 mm, bore diameter: 6 mm/6 mm



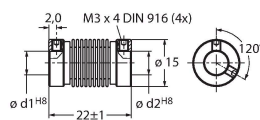
RCS-15-08-06 1545361

Bellows coupling, outer diameter:
15 mm, bore diameter: 8 mm/6 mm



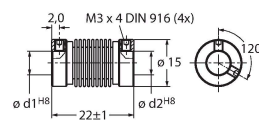
RCS-15-06-06 1545362

Bellows coupling, outer diameter:
15 mm, bore diameter: 6 mm/6 mm



RCS-15-06-04 1545363

Bellows coupling, outer diameter:
15 mm, bore diameter: 6 mm/4 mm



RCS-19-10-06 1545358

Bellows coupling, outer diameter:
19 mm, bore diameter: 10 mm/6 mm

